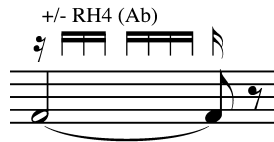


**Jeffrey Ryan**  
**Sinking In**  
for solo contrabassoon

*Performance notes*

Performance time: ca. 3:00

Accidentals apply only to the note immediately following and within each beamed group.



Alternately add/subtract the indicated key for colour inflections. The inflection may be in a notated rhythm (as in this example), or may be a colour trill (free). The final sound always begins and ends with the usual fingering (i.e. *without* the added key).

*Programme note*

This short, lyrical solo for contrabassoon is adapted from my contrabassoon concerto *Plumb*. It is free and expressive, beginning in the contrabassoon's upper register and gradually descending through two octaves. Grace notes and colour inflections evolve into shuddering tremolos, finally closing on a plaintive melody.

to Sophie Dansereau

# Sinking In

Jeffrey Ryan

for solo contrabassoon

*Senza misura* ♩ = ca. 54 *Plaintively*

*p* *< mp > p* *p*

*RH12 (BA)* *non-tr.* *+/- RH2 (A)* *(even) +/- RHT (Bb)*

*mp* *p* *mp*

*+/- RH2 (A)* *p* *> pp* *pp* *mf*

*+/- RH2 (A)* *mf* *p* *> pp* *pp* *espr., freely*

*fr* *non-tr.* *fr* *non-tr.*

*fr* *slower...* *non-tr.* *p* *mp* *p*

*pp* *p* *pp* *pp*